

# Did You Know...?

**1. It is mandatory to recycle all of these items.**

**2. The City of Burlington Department of Public Works or "DPW" provides a weekly recycling pickup service.**

To find out what day the recycle truck comes down your street call 863-9094 or see [www.dpw.ci.burlington.vt.us](http://www.dpw.ci.burlington.vt.us) (click on "recycling"). If trash services are not included with your rent, visit a CSWD Drop-Off Center or contract with a private hauler for trash pick up - look up "Garbage Removal" in the Yellow Pages.

**3. Need an extra blue bin?** Up to 3 bins per household are provided for FREE! Pick up a bins at:

Burlington DPW, 645 Pine St.; 863-9094  
CSWD Drop-Off Centers; 872-8111

**4. Need a bigger recycle bin?** Dwellings with 4+ units are eligible for a big wheel totter cart. Ask your landlord to contact Burlington DPW at 863-9094.

**5. Want to Compost?** Try Drop-Off Composting - it's FREE! See [cswd.net/dropoff\\_composting](http://cswd.net/dropoff_composting)

**6. Got other stuff to get rid of?** Learn how to recycle or reuse everything A-Z in Chittenden County. See [cswd.net/whattodo](http://cswd.net/whattodo)

**7. The State of Vermont requires that the following items be recycled: mercury thermostats, fluorescent bulbs, computers, sound systems, TVs, communication devices, and other electronics.**

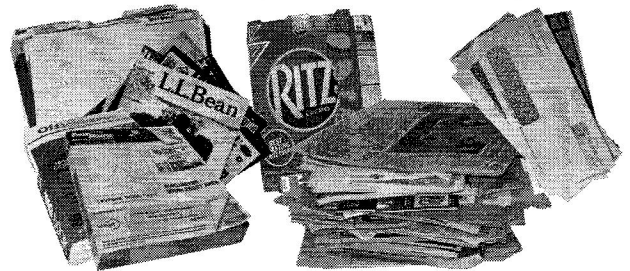
These items may not be discarded as trash. Contact CSWD for recycling and proper disposal opportunities.



**Most packaging, containers, and paper are recyclable in Chittenden County...**



**glass, plastic & metal bottles & cans**  
NO lids, please! They are too small to be recycled.



**paper, boxboard & cardboard**  
Must be clean and dry!



**plastic packaging, tubs & jugs**  
Must be at least 2" on any 2 dimensions.

**NO** styrofoam • plastic bags/wraps  
food • paper cups/plates • utensils  
fridge- or frozen-food boxes

## For information about:

- FREE blue bins, labels and signage
- FREE info about managing construction and hazardous waste
- FREE info on hassle-free composting programs
- Local Color paint

## Contact:

**CSWD**

**CHITTENDEN**  
Solid Waste District

(802) 872-8111  
[www.cswd.net](http://www.cswd.net)